

*Powering the trusted identities of
the world's people, places & things*



Tamper Evident RFID – Tags for security critical Applications

Christian Mirus – Business Development IDT

cmirus@hidglobal.com

June 26, 2018



About HID Global

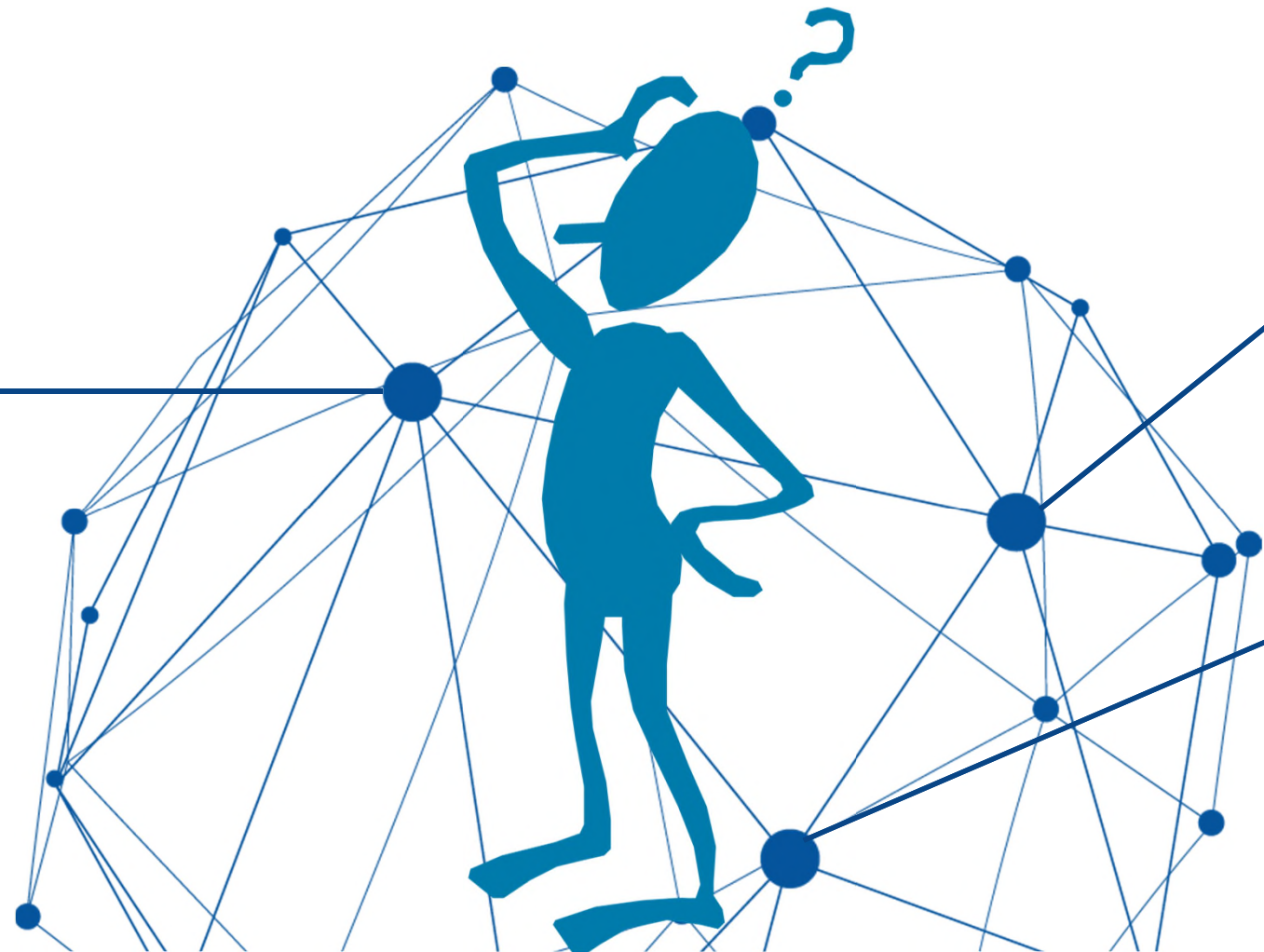
- Privately held company and an ASSA ABLOY Group brand
- Headquartered in Austin, TX
- 3,300+ employees worldwide
- International offices that support 100+ countries
- Production facilities in U.S., South America, Asia and Europe
- Primary brands include ActivID[®], OMNIKEY[®], EasyLobby[®], FARGO[®], IdenTrust[®], LaserCard[®], Lumidigm[®], Quantum Secure[®], Arjo Systems[®], Bluvision[®]
- Serves a variety of markets: PACS (physical access control), LACS (strong authentication / credential management, card personalization, visitor management), Government ID, Bluetooth Low-Energy (BLE) and (RAIN[®]) RFID identification technologies for a range of industrial applications



**Leading the industry in
security and sustainability**

Pick the right Tag for your Application

When do I need Security?



Logical Security



Physical Security



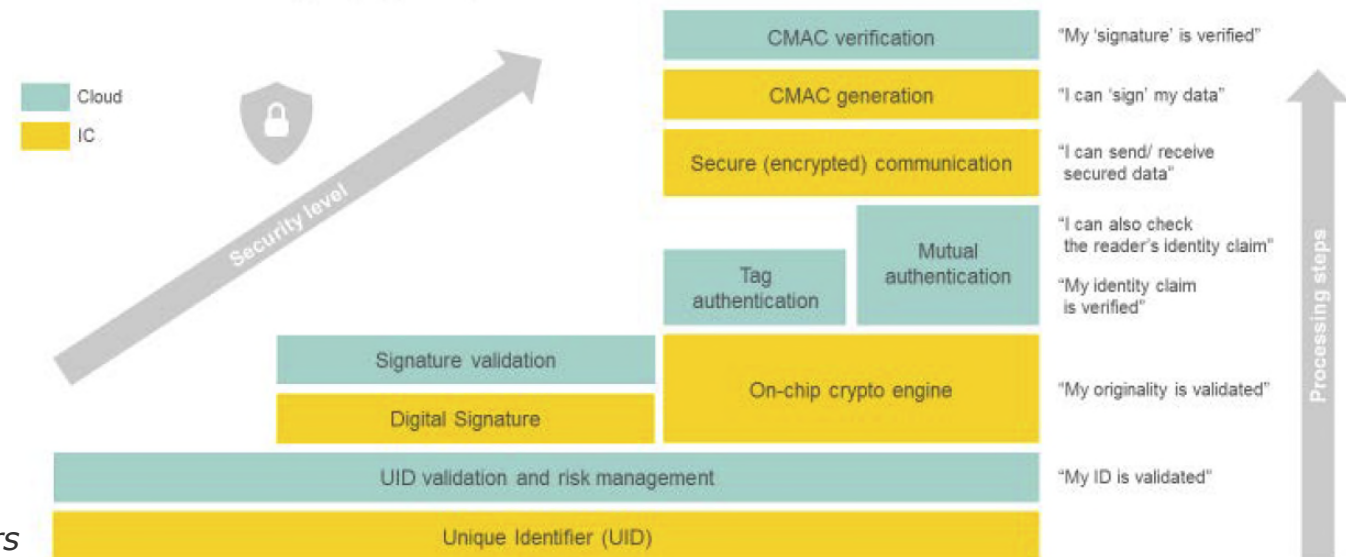
Logical Security (Cryptography)

- Common use cases
 - Access Control
 - Contactless Payment
 - Brand Protection (finished goods or consumables)



- Different security levels and complexity
 - Password
 - Symmetric Key(s)
 - Public/private asymmetric keys
 - PKI certificates ...

Security by Design:
from base level to cryptographic operations



Graphic by NXP Semiconductors

Physical Security: Tamper Evident vs. Tamper Proof

Tamper Evident



Tamper Proof



Tamper Respondent

Passive Tag Examples

SlimFlex™ Seal Tag vTamper



Includes a built-in cable tie for fast retrofit and **visually tamper evident** application.



Standard SlimFlex Seal Tag HF and UHF



Mini SlimFlex Seal Tag UHF



Large Seal Tag Black UHF



Seal Tag vTamper

HF Chip : ICODE SLIx2
UHF Chip: Higgs 3/4,
Read range up to: 8m (26 ft)

Sealing Bags of Ore



- Seal Tag vTamper used to tag bags of Ore helping optimization and logistics
- Proves that bag has not been opened between mine site and refinery



Advanced Seal- electrical Tamper

Electrical tamper Tag: Stops functioning when tampered
Good when verifying individual items



Seal Tag eTamper Evident HF/NFC ICODE SLIX

- App: NFC eTamper seal for cabinet, fire extinguisher, maintenance

eTamper Sticker / Coin MIFARE DESFire EV1 / HID Trusted Tag

- App: NFC Parking payment, Commercial Refueling, ...



size 18 x 23 x 3.5 mm

HF Chip: ICODE SLIX



size Diam 39 x 7 mm

HF Chip: DESFire, TTS

Seal Tag eTamper

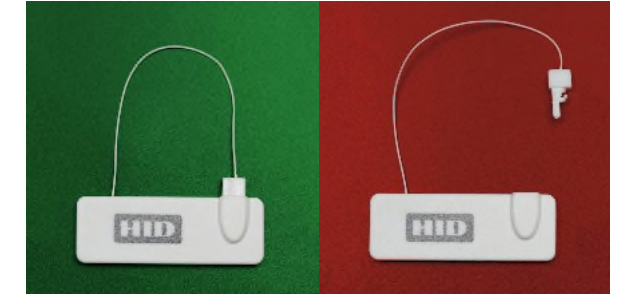
Advanced Seal- electrical detection



Seal Tag edTamper Evident UHF UCODE G2iM+

- Electrical detection: Tag provides alarm info when tampered
- Check integrity of Seal for life jacket. Crew can walk along the aisle once with an RFID reader and if a seal is broken or missing, the software can pinpoint the seat

Other applications: cabinet, evidence/equipment handling for police



Size 39 x 14 x 2.6 mm

Seal Tag edTamper



Seal Tag edTamper Padlock



- One-time use Padlock type passive tag
- To close industrial containers or similar compartments
- Splash water resistant
- Designed for outdoor use
- Provides different status when lock has been opened



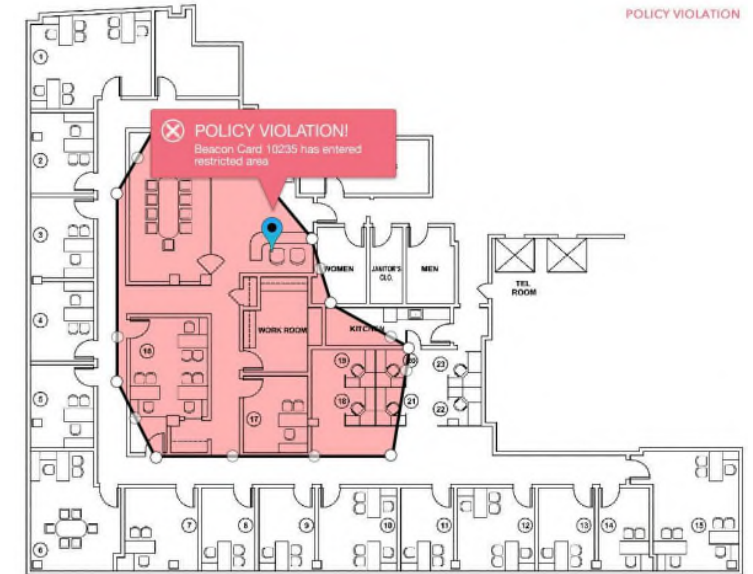
Size 60 x 30 x 111 mm

Chip: UCODE G2IM+

Active Tag Examples

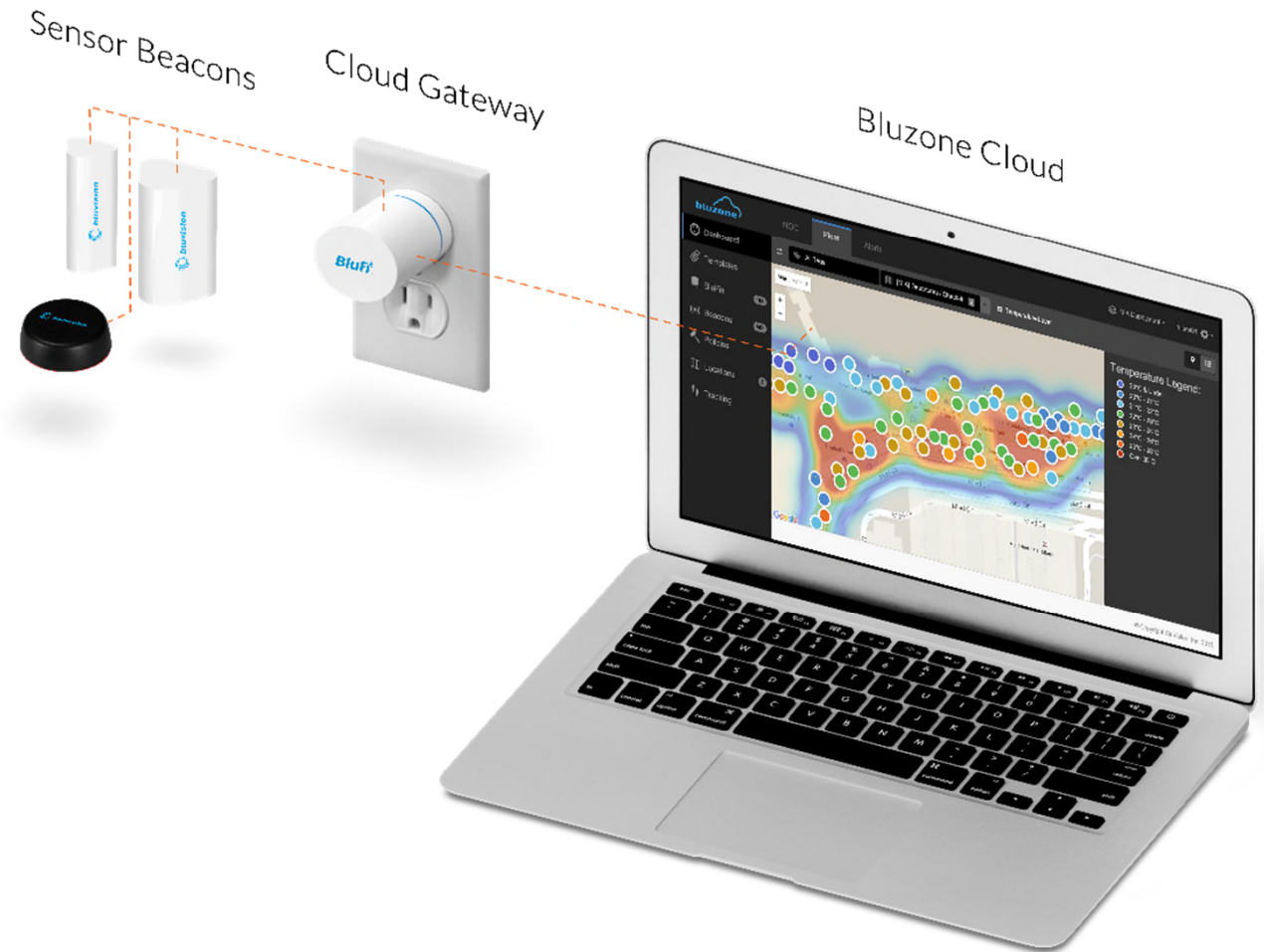
Active Theft Detection

- BEEKs™ tamper evident BLE beacon
- Item with beacon moved out of allowed zone (RTLS) → **Alert**
- Beacon removed → **Alert**
- Beacon destroyed → **Alert**
- Optional combination with temperature and/or vibration sensors for condition monitoring
- Remote management via Bluzone™ Cloud and BluFi™ gateways



Enabling powerful Solutions

- The combination of BEEKs™ BLE beacons, BluFi™ gateways and Bluzone Cloud™ services enables centrally managed professional IoT applications
- Real-Time Location (RTLS) and zone based location for workplace optimization and theft detection



Example of combining Physical and Logical Security

Proof of Presence



Tag	Tag Notes	VIEW HISTORY FOR TAG
11000940	London office	VIEW HISTORY FOR TAG: 11000940
11000983	Booth TAG 3	VIEW HISTORY FOR TAG: 11000983
11000984	Booth TAG4	VIEW HISTORY FOR TAG: 11000984
11000985	Booth TAG5	VIEW HISTORY FOR TAG: 11000985



Fire Ex 27
 Check and report any faults or damage
 Confirm yellow tag is in place and report if broken
 Report if regulator is red
 Tap to finish

Incident report:
 Swipe log

18/05 23-Sep-2018



Electronic Visit Verification (e.g. Home Healthcare)

Guard Tours

Maintenance and Compliance Inspections

Building High-Rise: Fire & Safety Implementation

Key Building Challenges

1. Compliance with building, federal and local safety inspection regulations
2. Thousands of industrial equipment parts, on paper labels
3. Improve traceability of maintenance logs
4. Antiquated maintenance scheduling



Industrial Sprinkler Equipment Systems

Mission:

Simplify and streamline maintenance & inspection process for industrial sprinkler equipment

Deployment Technical Requirements:

1. Easy **integration** into various sprinkler equipment and **CMMS** software applications
2. Must be **mobile** environment for field workers
3. Digital “proof of **compliance**” and reporting for regulatory mandates
4. **Authenticate** the technician to the specific equipment that is being serviced
5. Tag application must be **flexible**, and **robust** to affix to the various equipment & conditions



The Solution: Trusted Automated Maintenance & Inspection



Trusted Tag NFC

1. Strong Authentication
2. Tamper Evident NFC Type 4 + Barcode



Automated Decision

1. CMMS
2. Mobile Process
3. Reporting



HID Cloud Authentication

1. HID Authentication
2. SaaS



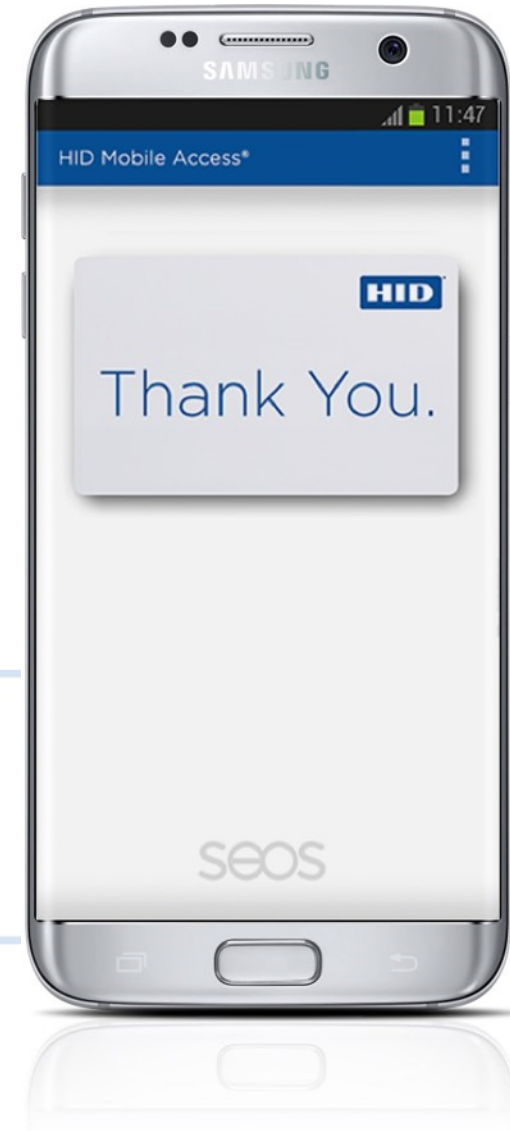
Facilitates a secure, efficient transaction when technician taps their smartphone on the tagged sprinkler system

SUMMARY

- **RFID** is a great way to **wirelessly identify** / authenticate objects
- For certain applications it is essential to ensure tags are not cloned and remain with the item to identify
- **Logical Security** (cryptography) **prevents** against tag cloning, eavesdropping, man-in-the middle etc. and **enables** applications like access control, payment and authentication
- **Physical security** can be achieved with different approaches (vTamper, eTamper, edTamper) – mostly for tamper evidence purposes due to cost/benefit requirements
- Combining both approaches leads to powerful solutions like „**Proof of Presence**“ across technologies



HID[®] Powering
Trusted Identities



hidglobal.com/rfid